

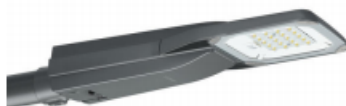
# A glimpse at dark-sky friendly luminaires

Christophe Martinsons

CSTB, France

**PHILIPS**

Lighting



## DigiStreet

### BGP760 LED16-/518 II DM11 DGR 62 S

DigiStreet Micro - LED module 1600 lm - 518 ClearStar WW - Safety class II - Distribution medium 11 - Dark gray - Luminaire surge protection level until 6 kV differential mode and 8 kV common mode - Spigot for diameter 62 mm

Developed with the aim to become your long term partner ,the system ready architecture of DigiStreet enables you to enjoy the benefits of connected lighting systems today and also gets the city ready for the innovations to come!. Its two sockets enable you to connect directly to the Philips CityTouch system and is also prepared to connect you to the future innovations of IoT.Next to this, each individual luminaire is uniquely identifiable, thanks to the Philips Service tag application. With a simple scan of a QR code, placed on the inside of the mast door, you gain instant access to the luminaire configuration, making maintenance and programming operations faster and easier, no matter what stage of the luminaire's lifetime.

Digistreet is also equipped with dedicated light recipes that: 1) maintain an optimal ecosystems for bats or 2) preserve a dark night sky.

**PHILIPS**

Lighting



## DigiStreet

### BGP761 LED45-4S/518 II DM11 DGR 62

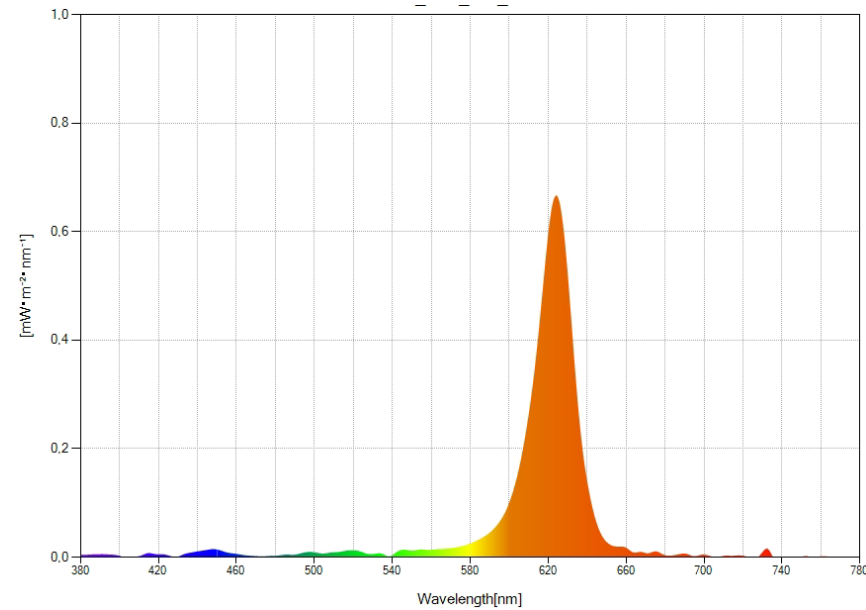
DigiStreet Mini - LED Module 4500 lm - 518 ClearStar WW - Safety class II - Distribution medium 11 - Dark gray - Luminaire surge protection level until 6 kV differential mode and 8 kV common mode - Spigot for diameter 62 mm

Developed with the aim to become your long term partner ,the system ready architecture of DigiStreet enables you to enjoy the benefits of connected lighting systems today and also gets the city ready for the innovations to come!. Its two sockets enable you to connect directly to the Philips CityTouch system and is also prepared to connect you to the future innovations of IoT.Next to this, each individual luminaire is uniquely identifiable, thanks to the Philips Service tag application. With a simple scan of a QR code, placed on the inside of the mast door, you gain instant access to the luminaire configuration, making maintenance and programming operations faster and easier, no matter what stage of the luminaire's lifetime. Digistreet is also equipped with dedicated light recipes that: 1) maintain an optimal ecosystems for bats or 2) preserve a dark night sky.

# Red and Amber SSL luminaires

Module LED	
Type de source lumineuse	LED
Nombre de LED	20
Efficacité source initiale	100 lm/W
Efficacité système initiale	83 lm/W
Code couleur source	610 (ClearField)
Indice de rendu des couleurs (IRC)	60
Température de couleur	1100 K
Tolérance de la température de couleur initiale	+/- 100 K (5 SDCM)
Tolérance de la température de couleur en fin de vie	+/- 100 K
Flux source initial	3100 lm
Tolérance du flux système	+/-7%
Flux système initial	2573 lm
Risque Photobiologique (RG)	RG 0 (exempt) selon la Norme Européenne CIE 62471

Red



Initial Performance (IEC Compliant)	
Initial luminous flux (system flux)	2790 lm
Luminous flux tolerance	+/-7%
Initial LED luminaire efficacy	82 lm/W
Init. Corr. Color Temperature	1800 K
Init. Color Rendering Index	50
Initial chromaticity	(0.43, 0.40) SDCM <5
Initial input power	34 W
Power consumption tolerance	+/-11%

Amber



Amber LEDs



Red LEDs